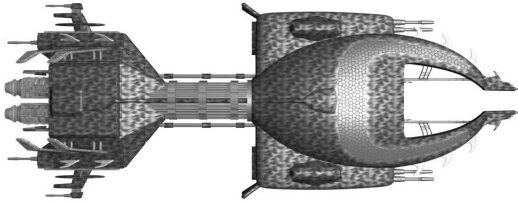


Tratharti Variant (Rare)

Version 2: 2E/SF2

Name: _____

Counter: _____



SPECS

Class: Capital Ship
In Service: 2231
Point Value: 900
Ramming Factor: 250
Jump Delay: N/A

MANEUVERING

Turn Cost: 2/3 Speed
Turn Delay: 2/3 Speed
Accel/Decel Cost: 3 Thrust
Pivot Cost: 2+2 Thrust
Roll Cost: 1+1 Thrust

COMBAT STATS

Fwd/Aft Defense: 13
Stb/Port Defense: 15
Engine Efficiency: 3/1
Extra Power: +0
Initiative Bonus: +0

WEAPON DATA

Heavy Bolter
Class: Particle
Modes: Standard
Damage: 24
Range Penalty: -1 per 3 hexes
Fire Control: +3/+2/-1
Intercept Rating: n/a
Rate of Fire: 1 per 3 turns

Scatter-Pulsar

Class: Particle
Modes: Pulse
Damage: 6 1d5 times
Maximum Pulses: 6
Pulse Grouping: +1 per 5
Range Penalty: -2 per hex
Fire Control: +1/+2/+3
Intercept Rating: -2
Rate of Fire: 1 per turn

FORWARD HITS

1-4: Retro Thrust
5-6: Scatter-Pulsar
7-9: Heavy Bolter
10-18: Forward Struct
19-20: PRIMARY Hit

SIDE HITS

1-6: Port/Stb Thrust
7-10: Heavy Bolter
11-18: Port/Stb Struct
19-20: PRIMARY Hit

AFT HITS

1-6: Main Thrust
7-8: Heavy Bolter
9-10: Scatter-Pulsar
11: Aft Engine
12-18: Aft Struct
19-20: PRIMARY Hit

PRIMARY HITS

1-13: Primary Struct
14-15: Sensors
16: Primary Engine
17: Hangar
18-19: Reactor
20: C & C

SENSOR DATA

Defensive EW

Target #1

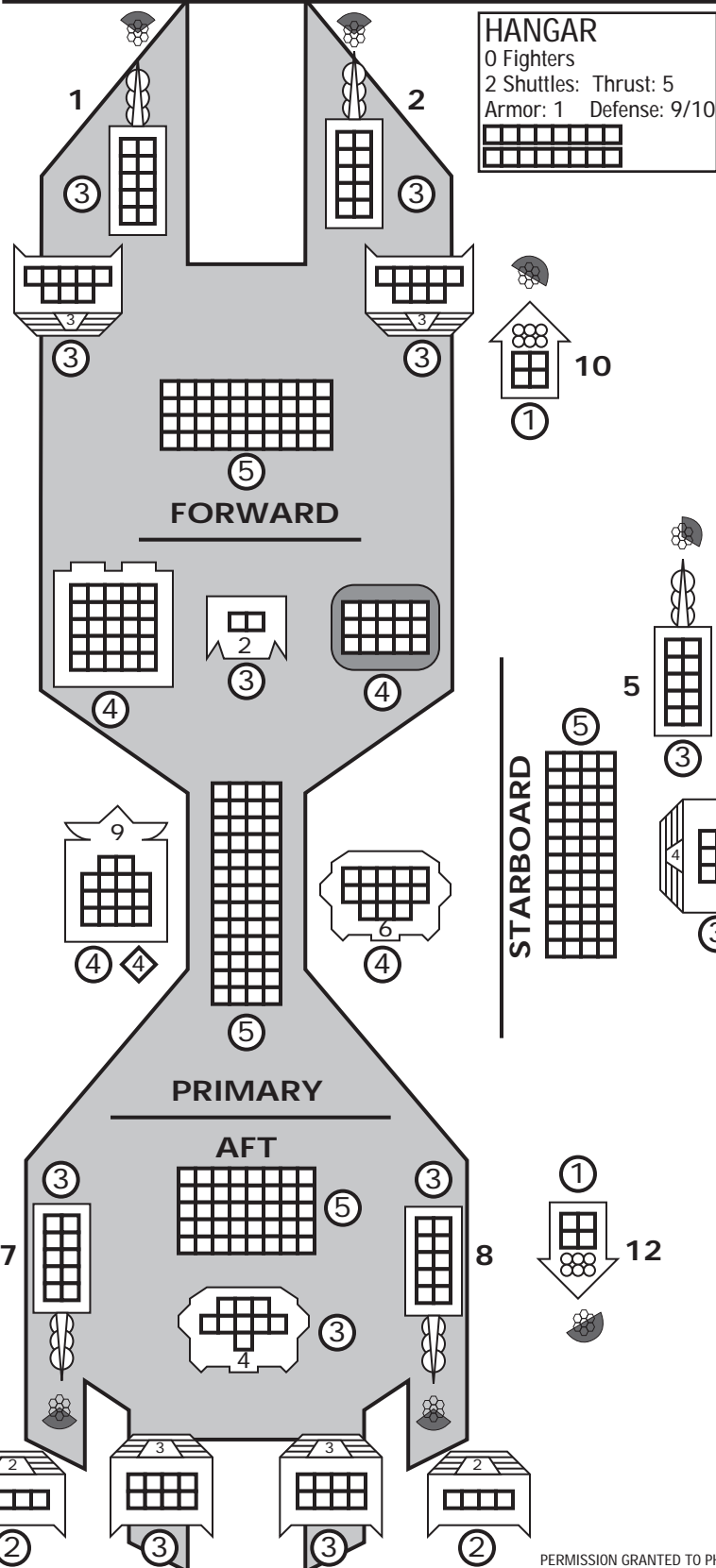
Target #2

Target #3

Target #4

Target #5

Target #6



ICON RECOGNITION

- Thruster
- C & C
- Sensors
- Engine
- Reactor
- Hangar
- Heavy Bolter
- Scatter-Pulsar